

Geography & Land Use

Section 3

GEOGRAPHY & LAND USE

This section presents statistics on physical geography, water areas, climate, land use, value and ownership. Information on agriculture, forests and parks may be found in other sections of the book.

Maui County consists of four of the major eight islands in the State of Hawai'i: Maui, Moloka'i, Lāna'i and Kaho'olawe. The total land area of Maui County is 1,170.9 square miles with a general coastline of 210 statute miles. The highest peak in the county is on Haleakalā, Maui with its 10,023 foot summit at Pu'u 'ula'ula (Red Hill); the largest stream is Kalialinui-Wai'ale Gulch, Maui, 18 miles; the most extensive lake or similar body, Keālia Pond (Marsh), Maui, 500 acres, and the highest waterfall (in the county and in the state) is Kahiwa, Moloka'i, a 1,750-foot cascade.

The State Land Use Commission currently zones 30,060 acres in Maui County as urban, 311,601 as conservation, 400,913 as agricultural and 8,326 as rural.

The island of Kaho'olawe (28,800 acres) was transferred from the federal government to the State of Hawai'i in May 1994.

Considerable caution is necessary in comparing statistics from different sources on land use and ownership. Variations in definitions and survey dates seriously affect comparability.

Sources important to these tables are the U.S. National Climatic Data Center, and The State of Hawai'i Data Book, published annually by the Department of Business, Economic Development and Tourism.

3.1.1

LAND AND WATER AREA OF COUNTIES AND ISLANDS

County or Island	Square Miles			Acres ¹	
	Total	Land ²	Inland Water ³	Total	Land
State Total	6,468.2	6,422.63	45.6	4,139,667	4,110,483
Counties⁴					
Hawai'i	4,029.4	4,028.42	1.0	2,578,829	2,578,189
Maui	1,170.9	1,161.52	9.4	749,389	743,373
Kalawao	13.0	11.99	1.0	8,314	7,674
Honolulu ⁵	624.9	600.74	24.2	399,962	384,474
Kaua'i ⁵	630.0	619.96	10.0	403,174	396,774
Islands⁴					
Hawai'i	4,029.4	4,028.42	1.0	2,578,829	2,578,189
Maui	777.9	771.99	5.9	497,850	494,074
Molokini ⁶	0.0	0.04	0.0	23	23
Kaho'olawe	45.5	44.60	0.9	29,120	28,544
Lāna'i	141.9	141.07	0.8	90,797	90,285
Moloka'i	263.3	260.46	2.8	168,486	166,694
O'ahu	621.6	597.64	24.0	397,850	382,490
Kaua'i	561.2	552.35	8.8	359,136	353,504
Niihau	68.7	67.60	1.1	43,968	43,264
Lehua	0.4	0.44	0.0	284	284
Ka'ula	0.2	0.25	0.0	158	158

1. Areas in acres were calculated directly from the figures shown for square miles; these equivalents were independently rounded, and hence may not add exactly to the indicated totals and subtotals. One square mile = 640 acres.

2. Dry land and land temporarily or partially covered by water, as marshland, swamps, etc. streams and canals under one-eighth statute mile wide; and lakes, reservoirs, and ponds under 40 acres of area.

3. Permanent inland water surface, such as lakes, reservoirs, and ponds having 40 acres or more of area; streams, sloughs, estuaries, and canals one-eighth statute mile or more in width; deeply indented embayments and sounds, and other coastal waters behind or sheltered by headlands or islands separated by less than 1 nautical mile of water and islands having less than 40 acres of area.

4. Because of rounding, island figures may not add to county figures.

5. Reflect inclusion of Ka'ula in the County of Kaua'i rather than in the City and County of Honolulu (Act 245, S.L.H. 1988, approved June 9, 1988).

6. Molokini, offshore of Maui, not measured; other sources give the area of Molokini as 0.036 square miles.

SOURCE: U.S. CENSUS BUREAU, 2010 CENSUS REDISTRICTING DATA (P.L. 94-171) SUMMARY FILE (FEBRUARY 2011), AND CALCULATIONS BY THE HAWAII STATE DEPARTMENT OF BUSINESS, ECONOMIC DEVELOPMENT & TOURISM, OFFICE OF PLANNING, STATE OF HAWAII DATA BOOK 2015 AND THE HAWAII STATE DATA CENTER, AND UNPUBLISHED RECORDS.

3.1.2

GENERAL COASTLINE AND TIDAL SHORELINE BY COUNTY AND ISLAND

	General Coastline ¹		Tidal Shoreline ²	
	Statute Miles	Kilometers ³	Statute Miles	Kilometers ³
State Total	750	1,207	1,052	1,693
Counties				
Hawai'i	266	428	313	504
Maui and Kalawao	210	338	343	552
Honolulu	137	220	234	377
Kaua'i	137	220	162	261
Islands⁴				
Hawai'i	266	428	313	504
Maui	120	193	149	240
Kaho'olawe	29	47	36	58
Lāna'i	47	76	52	84
Moloka'i	88	142	106	171
O'ahu	112	180	209	336
Kaua'i	90	145	110	177
Ni'ihau	45	72	50	80
Ka'ula	2	3	2	3
Northwestern Hawaiian Islands⁵				
Nihoa	3	5	3	5
Necker Island	2	3	2	3
French Frigate Shoals	6	10	6	10
Laysan Island	6	10	6	10
Lisianski Island	3	5	3	5
Kure Atoll	5	8	5	8

1. Figures are lengths of general outline of seacoast. Data for the four islands of Maui County are not consistent with the reported county total.

2. Shoreline of outer coast, offshore islands, bays, rivers, and creeks is included to the head of tidewater or to a point where tidal waters narrow to a width of 100 feet.

3. Derived from data expressed in statute miles; independently rounded and accordingly may not add exactly to indicated totals and subtotals. 1 mi. = 1.609 km.

4. Data are not available for five minor islands: Molokini, Lehua, Gardner Pinnacles, Maro Reef, and Pearl and Hermes Atoll.

5. Excludes the Midway Islands, which are part of the Hawaiian Archipelago but not legally part of the State of Hawai'i. Midway has a general coastline of 20 miles and a tidal shoreline of 33 miles.

SOURCE: U.S. DEPARTMENT OF COMMERCE, NATIONAL OCEAN SURVEY, THE COASTLINE OF THE UNITED STATES (1975).

3.1.3

MAJOR NAMED WATERFALLS MAUI COUNTY

Waterfall	Cascade Height (feet)	Horizontal Distance (feet)	Average Discharge (million gal/day)
Maui			
Honokōhau	1,120	500	26.6
Waihi'umalu	400	150	NA
Waimoku	40	50	37.1
Moloka'i			
Kahiwa	1,750	1,000	NA
Pāpalaua	1,200	500	NA
Wailele	500	150	NA
Hāloku	500	200	NA
Hīpuapua	500	300	NA
'Olo'upena	300	150	NA
Moa'ula	250	200	19.7

Note: Includes the largest named waterfalls in each island, either in height or average discharge; all other named falls 250 feet high or over; and well-known small falls. Many unnamed falls have sheer drops of 200 feet or more.

NA: Not available

SOURCE: U.S. GEOLOGICAL SURVEY, RECORDS; HAWAI'I STATE DEPARTMENT OF LAND AND NATURAL RESOURCES, DIVISION OF WATER AND LAND DEVELOPMENT, RECORDS, AND HAWAI'I STATE DEPARTMENT OF PLANNING AND ECONOMIC DEVELOPMENT, HAWAI'I, THE NATURAL ENVIRONMENT(1974), P.18.

3.1.4

ELEVATIONS OF MAJOR SUMMITS

Elevation of the highest point on each island and other important peaks

Island and Summit	Feet	Meters	
Hawai'i	Mauna Ke'a ¹	13,796	4,205
	Mauna Loa ²	13,679	4,169
	Hualālai	8,271	2,521
	Ka'unu o Kaleihoohe	5,480	1,670
	Kīlauea (Uwēkahuna)	4,093	1,248
	Kīlauea (Halema'uma'u Rim)	3,660	1,116
Kaho'olawe	Pu'u 'O Moa'ula Nui	1,483	452
	Pu'u Moa'ula Iki	1,434	437
Maui	Haleakalā (Red Hill)	10,023	3,055
	Haleakalā (Ka'upō Gap)	8,201	2,500
	Pu'u Kukui	5,788	1,764
	'Īao Needle	2,250	686
Lāna'i	Lāna'ihale	3,366	1,026
Moloka'i	Kamakou	4,961	1,512
	Oloku'i	4,606	1,404
	Ka'unuohua	4,535	1,382
	Kalaupapa Lookout	1,600	488
	Mauna Loa (Kukui)	1,430	436
O'ahu	Ka'ala	4,003	1,220
	Pu'u Kalena	3,504	1,068
	Kōnahuanui	3,150	960
	Tantalus	2,013	614
	Olomana	1,643	501
	Koko Crater (Kohēlepelepe)	1,208	368
	Nu'uuanu Pali Lookout	1,186	361
	Diamond Head	760	232
	Koko Head	642	196
Punchbowl	500	152	

CONTINUES ON THE NEXT PAGE

3.1.4

CONTINUED

Island and Summit		Feet	Meters
Kaua'i	Kawaikini	5,243	1,598
	Wai'ale'ale	5,148	1,569
	NāmoloKama Mountain	4,421	1,348
	Kalalau Lookout	4,120	1,256
	Hā'upu	2,297	700
	Sleeping Giant (Nounou)	1,241	378
Ni'ihau	Paniau	1,250	381
Lehua		699	213
Ka'ula		548	167
Nihoa	Millers Peak	903	275
Necker Island	Summit Hill	276	84
French Frigate Shoal	La Perouse Pinnacles	120	37
Gardner Pinnacles		190	58
Maro Reef		Awash	Awash
Laysan Island		40	12
Lisianski Island		40	12
Pearl and Hermes Atoll		10	3
Midway Islands		12	4
Kure Atoll		20	6

1. According to the 1995 Guinness Book of Records (p. 147), "The world's tallest mountain measured from its submarine base (3,280 fathoms) in the Hawaiian Trough to its peak is Mauna Kea... with a combined height of 33,480 ft., of which 13,796 ft. are above sea level."

2. Guinness (p. 142-143) describes Mauna Loa as having "dimensions, but not height, [which] exceed those of Mt. Everest... The axes of its elliptical base, 16,322 ft. below sea level, have been estimated at 74 miles and 53 miles."

SOURCE: HAWAII STATE DEPARTMENT OF ACCOUNTING AND GENERAL SERVICES, SURVEY DIVISION, DATA PROVIDED APRIL 21, 1992; U.S. NATIONAL CARTOGRAPHIC INFORMATION CENTER, DATA PROVIDED OCTOBER 11, 1978; U.S. GEOLOGICAL SURVEY TOPOGRAPHIC MAPS, 1981–1984; HAWAIIAN GOVERNMENT SURVEY (FOR NIHOA AND MOLOKINI); U.S.S. Tanager Survey, 1923 (FOR NECKER ISLAND, FRENCH FRIGATE SHOALS, LAYSAN, LISIANSKI, PEARL, HERMES ATOLL AND KURE ATOLL).

3.1.5

MISCELLANEOUS GEOGRAPHIC STATISTICS BY ISLAND

	State	Hawai'i	Maui	Kaho'olawe	Lāna'i	Molokai	O'ahu	Kaua'i	Ni'ihau
Extreme Length (miles)	NA	93.0	48.0	11.0	18.0	38.0	44.0	33.0	8.0
Extreme Width (miles)	NA	76.0	26.0	6.0	13.0	10.0	30.0	25.0	6.0
Miles of Sea Cliffs with Heights of 1,000 Feet or More ¹	33.0	4.0	-	-	1.0	14.0	-	11.0	3.0
Miles from Coast of Most Remote Point	28.5	28.5	10.6	2.4	5.2	3.9	10.6	10.8	2.4
Percent of Area Within 5 Miles of Coast	48.6	30.0	76.1	100.0	100.0	100.0	79.0	65.0	100.0
Percent of Area with Elevation of Less than 500 Feet	20.8	12.0	24.9	38.9	24.8	37.3	45.3	35.6	78.2
Percent of Area with Elevation of 2,000 Feet or More	50.9	68.4	41.4	0.0	6.3	17.8	4.6	24.0	0.0
Approximate Mean Altitude (feet)	3,030.0	3,950.0	2,390.0	600.0	1,140.0	1,150.0	860.0	1380.0	530.0
Percent of Area with Slope Less than 10%	63.5	76.0	38.5	60.0	61.0	53.0	42.5	33.5	68.0
Percent of Area with Slope 20% or more	17.0	4.0	36.0	9.0	16.0	26.0	45.5	50.5	12.5

1. According to Lee S. Motteier, Geography and Map Division, Bernice P. Bishop Museum, the sea cliffs along the northeastern coast of Molokai between Umilehi Point and Pu'uuka'ōkū Point drop 3,250 feet at an average slope of 58 degrees. These cliffs have been described by The Guinness Book of World Records (1995 edition, p. 154) as "the highest sea cliffs in the world."

NA: Not applicable.

SOURCE: HAWAII STATE DEPARTMENT OF PLANNING AND ECONOMIC DEVELOPMENT, HAWAII, THE NATURAL ENVIRONMENT (1974), P. 19; AND U.S. GEOLOGICAL SURVEY, ELEVATIONS AND DISTANCES IN THE UNITED STATES (1978), P. 4-5.

3.1.6

**TEMPERATURE AND PRECIPITATION
AVERAGES AND EXTREMES, MAUI COUNTY**

TEMPERATURE	Station	Elevation (feet)	Annual Average		Warmest Month		Coollest Month		Record High		Record Low		
			High	Low	High	Low	High	Low	°F	Date	°F	Date	
	Haleakalā Ranger Station	6,962	62.8	45.6	66.2	48.8	59.6	42.3	80	10/06/73	27	02/26/65	
	Hāna Airport	75	80.2	68.2	82.9	71.6	77.7	64.4	94	11/03/79	50	02/19/58	
	Kahului Airport	51	84.3	67.4	88.0	71.4	80.7	63.0	97	08/22/15	48	01/20/69	
	Kailua (NE Maui, Inland)	700	75.1	63.4	77.8	66.5	72.7	59.2	90	08/30/47	44	03/16/09	
	Kapalua Airport	240	81.8	69.1	85.7	72.0	78.2	65.8	98	04/20/05	58	12/31/14	
	Kula Hospital	3,030	71.4	54.9	75.2	57.8	68.1	51.7	91	06/19/35	38	01/22/97	
	Molokaʻi Airport	443	81.6	67.3	85.5	71.4	77.6	62.9	93	08/08/83	46	03/04/87	
	Lānaʻi Airport	1,300	79.7	63.3	83.5	66.7	76.0	59.7	93	07/02/04	42	01/10/93	
PRECIPITATION	Station	Annual Avg Inches	Days Precip ≥ 0.01 in.	Wettest Year		Driest Year		Wettest Month		Driest Month		1 Day Record	
				Inches	Year	Inches	Year	Inches	Month	Inches	Month	Inches	Date
	Haleakalā Ranger Station	49.74	140	121.16	1980	17.71	1962	7.65	Mar	1.38	Jun	18.50	01/09/80
	Hāna Airport	79.23	270	126.23	1965	48.36	2001	8.99	Mar	4.31	Jun	19.45	03/30/07
	Kahului Airport	17.83	91	40.63	1989	6.76	1998	3.35	Dec	0.20	Jun	6.40	12/20/17
	Kailua (NE Maui, Inland)	107.89	282	216.65	1914	75.27	1933	11.35	Mar	6.82	Jun	15.20	11/15/65
	Kapalua Airport	29.01	155	46.26	1989	5.96	2009	4.58	Dec	0.91	Sept	8.14	03/24/06
	Kula Hospital	30.76	88	70.72	1968	11.59	1998	3.93	Dec	1.48	Aug	9.01	12/20/55
	Molokaʻi Airport	24.68	111	43.14	1965	7.15	2012	4.29	Dec	0.48	Jun	9.03	02/12/89
	Lānaʻi Airport	15.59	67	47.66	1951	5.28	1999	2.47	Jan	0.44	Jul	10.45	11/10/55

Note: 1981-2010 Climate Normals.
SOURCE: U.S. DEPARTMENT OF COMMERCE, NATIONAL OCEANIC AND ATMOSPHERIC ADMINISTRATION, WESTERN REGIONAL CLIMATE CENTER, HAWAII CLIMATE SUMMARIES.

3.1.7

**MONTHLY RAINFALL AND TEMPERATURE AT SPECIFIED LOCATIONS
MAUI COUNTY, 2017**

Rainfall ¹	Jan	Feb	Mar	Apr	May	June	July	Aug	Sept	Oct	Nov	Dec	Annual
Maui													
Ha'ikū	1.98	4.05	4.38	13.19	1.64	2.33	4.25	3.88	1.13	5.88	8.97	10.82	62.50
Haleakalā Ranger Station	4.03	2.67	5.15	6.97	3.04	1.27	2.34	1.11	1.71	1.91	12.21	5.23	47.64
Hāna Airport	3.59	3.81	5.10	10.42	2.70	4.69	3.95	NA	NA	8.26	6.61	11.44	60.57
Kahului Airport	0.55	1.93	4.14	7.77	0.08	0.12	0.25	0.26	0.06	2.08	0.94	7.92	26.10
Kailua (NE Maui)	3.29	2.02	8.72	4.24	7.73	0.93	6.15	6.54	2.44	8.42	15.93	0.09	66.50
Kapalua Airport	1.94	2.87	1.65	6.06	1.07	0.61	0.92	0.94	0.39	8.37	2.96	7.58	35.36
Kula Branch Station	0.41	2.41	4.72	7.70	2.47	2.27	0.84	1.40	0.86	4.33	0.64	3.01	31.06
Makena Golf Course	0.15	2.45	7.13	0.26	0.20	0.30	1.19	0.60	0.21	5.14	0.00	1.38	19.01
'Ohe'o	2.31	5.95	1.83	7.13	NA	8.17	4.47	5.20	5.25	12.08	9.73	4.64	66.76
Pa'akea	2.59	3.34	5.88	1.01	2.00	2.61	6.00	7.75	2.00	8.42	25.75	2.90	70.25
Pukalani	2.01	3.84	4.22	8.99	0.98	1.01	0.32	1.95	0.30	3.57	3.91	7.67	38.77
'Ulupalakua Ranch	0.47	3.24	7.94	8.16	3.13	5.48	0.86	0.26	0.90	4.95	2.69	2.82	40.90
Waihe'e Valley	6.48	3.86	5.90	NA	0.92	1.54	2.57	1.90	0.80	7.93	5.83	20.50	58.23
Wailuku	1.17	3.52	3.66	8.91	0.62	0.41	0.71	0.46	0.20	4.69	4.30	13.32	41.97
Moloka'i													
Maunaloa	0.23	2.34	0.18	3.27	1.56	0.82	0.79	1.52	1.74	6.90	0.92	2.03	22.30
Moloka'i Airport	0.27	1.16	1.45	6.54	1.40	0.35	0.37	0.06	0.19	3.90	0.41	2.47	18.57
Kaunakakai	0.00	NA	1.39	1.65	2.32	0.35	0.96	0.02	0.02	3.66	0.27	1.91	12.55

3.1.7

CONTINUED

Temperature ^{1,2}	Jan	Feb	Mar	Apr	May	June	July	Aug	Sept	Oct	Nov	Dec	Annual
Maui													
Haleakalā Ranger Station	52.3	52.1	54.0	54.2	53.1	56.5	58.8	58.9	56.5	53.7	52.8	50.3	54.4
Hāna Airport	71.3	70.9	73.4	74.8	75.1	76.6	77.6	NA	NA	75.9	74.3	70.8	74.1
Kahului Airport	72.2	73.4	75.1	76.0	76.4	79.4	80.8	80.9	80.3	79.1	74.4	71.9	76.7
Kailua (NE Maui)	66.3	65.3	68.7	70.4	71.5	71.5	NA	NA	72.5	72.4	69.6	66.2	69.4
Kapalua Airport	71.1	72.2	75.1	76.6	76.1	79.1	80.2	80.6	80.4	78.2	74.3	71.3	76.3
Kula Branch Station	59.5	60.2	62.5	62.8	63.7	65.4	67.0	67.4	67.1	65.8	63.2	60.4	63.8
Kula Hospital	57.7	59.5	61.3	61.9	62.7	NA	66.0	66.4	65.8	65.2	61.6	58.8	62.4
Makana Golf Course	71.6	71.6	74.0	74.7	75.8	77.7	78.6	79.1	79.5	77.9	74.7	71.2	75.5
‘Ohe‘o	74.9	75.0	75.4	NA	NA	NA	79.1	79.2	78.4	77.6	75.3	72.9	76.4
Moloka‘i													
Moloka‘i Airport	70.7	72.7	74.8	73.4	75.9	79.4	82.3	80.6	79.2	77.7	74.3	70.5	76.0

1. Individual months not used for annual or monthly statistics if more than 5 days are missing.

2. Average temperature for the month.

NA: Not available

SOURCE: U.S. DEPARTMENT OF COMMERCE, NATIONAL OCEANIC AND ATMOSPHERIC ADMINISTRATION, WESTERN REGIONAL CLIMATE CENTER, HAWAII CLIMATE SUMMARIES.

3.1.8

ANNUAL RAINFALL AND TEMPERATURE AT SPECIFIED LOCATIONS, MAUI COUNTY

Annual Rainfall, Inches					
	2013	2014	2015	2016	2017
Maui					
Ha'ikū	37.99	51.19	52.28	56.14	62.50
Haleakalā Ranger Station	11.18	60.64	64.78	58.41	47.64
Hāna Airport	57.54	76.85	71.25	89.81	60.57
Kahului Airport	15.41	23.25	29.26	19.00	26.10
Kailua (NE Maui)	70.47	100.52	113.42	107.94	68.31
Kapalua Airport	21.36	36.91	32.99	30.98	35.36
Kula Branch Station	22.16	39.26	39.86	26.88	31.06
Makena Golf Course	10.80	29.82	6.79	16.72	19.01
'Ohe'o	65.76	70.42	81.89	70.65	66.76
Pa'akea	85.32	118.74	178.33	186.39	114.23
Pukalani	40.23	53.88	33.21	41.98	38.77
'Ulupalakua Ranch	26.84	42.86	42.76	29.71	40.90
Waihe'e Valley	40.63	58.75	63.72	62.42	58.23
Wailuku	19.30	22.09	36.03	24.01	41.97
Moloka'i					
Maunaloa	16.81	36.43	27.01	25.25	22.30
Moloka'i Airport	18.91	40.38	22.52	14.96	18.57
Kaunakakai	15.08	19.59	13.90	9.10	12.55
Average Annual Temperature, Fahrenheit					
	2013	2014	2015	2016	2017
Maui					
Haleakalā Ranger Station	52.5	54.7	55.0	54.7	54.4
Hāna Airport	74.2	74.9	75.4	74.7	74.1
Kahului Airport	76.5	77.0	77.2	77.2	76.7
Kailua (NE Maui)	69.7	70.2	71.0	70.2	69.4
Kapalua Airport	78.1	76.1	76.9	76.4	76.3
Kula Branch Station	63.5	64.1	64.6	64.2	63.8
Kula Hospital	63.0	63.2	63.5	63.3	62.4
Makena Golf Course	75.5	75.5	72.8	76.7	75.5
'Ohe'o	75.5	75.5	73.9	77.2	76.4
Moloka'i					
Moloka'i Airport	74.2	74.9	75.2	76.5	76.4

SOURCE: U.S. DEPT. OF COMMERCE, NATIONAL OCEANIC AND ATMOSPHERIC ADMINISTRATION, NATIONAL CLIMATIC DATA CENTER.

3.2.1

TRENDS IN REAL PROPERTY TAX BASE MAUI COUNTY

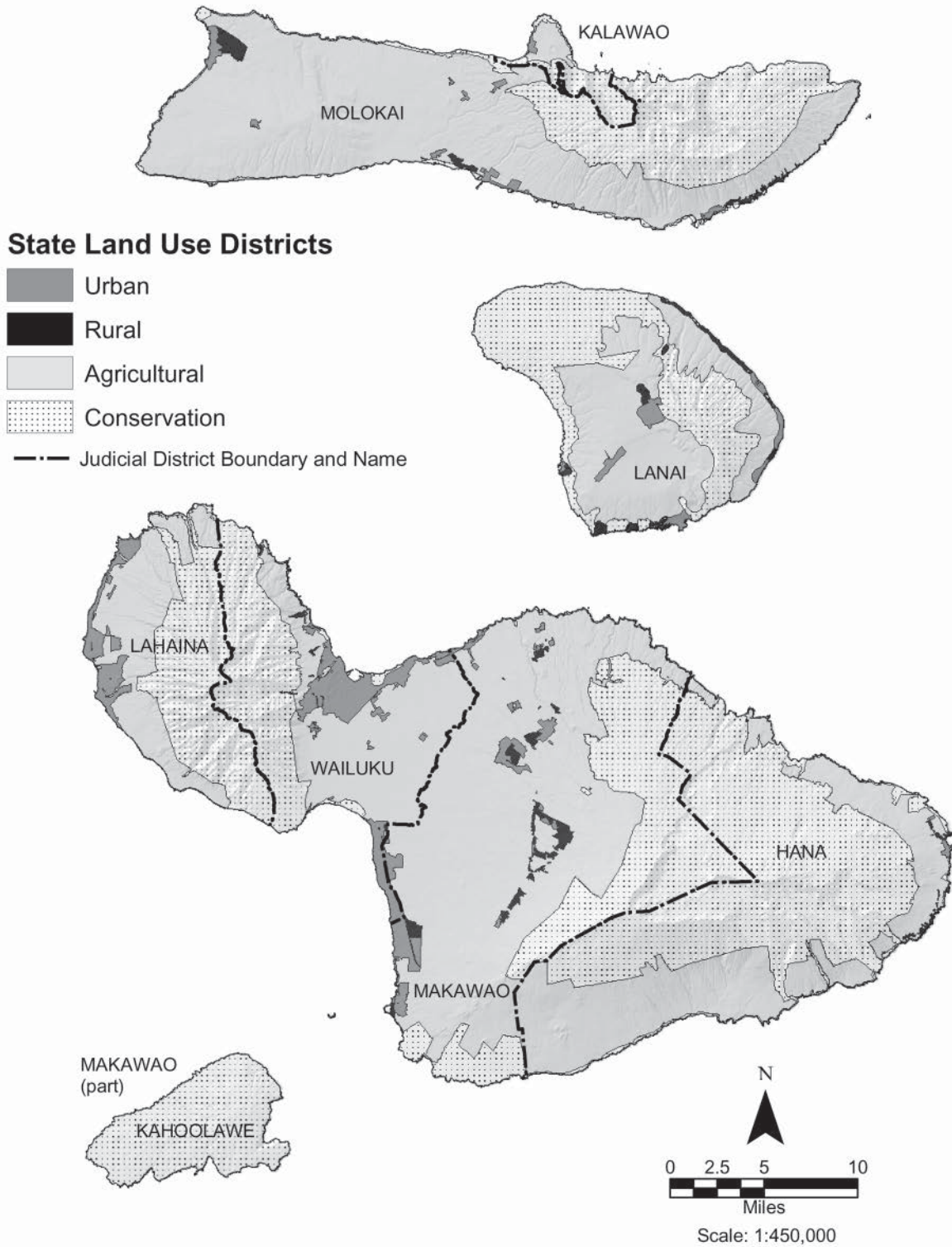
*Gross valuation in thousands
As of mid-April*

	2012	2013	2014	2015	2016	2017
Residential	5,661,777	5,893,266	6,028,645	6,711,804	7,254,893	7,695,201
Land	3,503,854	3,601,197	3,686,699	4,070,656	4,261,638	4,530,061
Improvement	2,157,923	2,292,069	2,341,946	2,641,148	2,993,255	3,165,140
Apartment	4,734,126	4,916,549	5,234,865	5,946,767	6,277,268	6,587,930
Land	1,491,850	1,623,663	1,726,925	1,848,829	1,895,057	1,984,330
Improvement	3,242,276	3,292,887	3,507,941	4,097,938	4,382,212	4,603,600
Commercial	2,090,675	2,118,943	2,172,533	3,181,514	3,683,412	3,486,977
Land	1,183,383	1,196,976	1,222,050	2,043,733	2,316,865	2,076,444
Improvement	907,292	921,968	950,483	1,137,781	1,366,546	1,410,533
Industrial	1,617,626	1,793,130	1,628,188	1,869,580	2,352,738	2,217,395
Land	959,813	1,115,918	919,840	1,100,212	1,517,727	1,326,758
Improvement	657,813	677,213	708,349	769,368	835,011	890,637
Agricultural	3,134,209	3,401,327	3,515,172	3,762,908	4,000,605	4,126,331
Land	1,998,325	2,089,824	2,151,407	2,241,518	2,256,689	2,271,149
Improvement	1,135,884	1,311,504	1,363,765	1,521,390	1,743,916	1,855,182
Conservation	406,382	500,531	471,161	490,533	525,273	518,667
Land	281,471	295,211	281,645	285,855	305,577	295,147
Improvement	124,911	205,320	189,516	204,678	219,696	223,520
Hotel/Resort	7,374,930	7,404,724	8,884,090	9,378,253	9,769,407	10,037,520
Land	1,434,536	1,450,145	1,783,169	1,858,055	1,835,145	1,740,596
Improvement	5,940,394	5,954,578	7,100,922	7,520,198	7,934,261	8,296,924
Homeowner	12,111,365	12,172,724	12,911,672	14,318,802	15,493,779	15,904,774
Land	5,530,653	5,529,016	5,988,415	6,645,531	6,994,332	7,202,954
Improvement	6,580,712	6,643,709	6,923,257	7,673,272	8,499,447	8,701,820
Time Share	1,510,939	1,484,089	1,595,127	1,773,726	1,908,345	1,982,492
Land	173,172	169,889	191,541	202,790	203,455	203,455
Improvement	1,337,767	1,314,201	1,403,586	1,570,936	1,704,890	1,779,037
Commercialized Residential	75,248	94,183	109,353	120,166	163,441	172,475
Land	31,778	41,861	57,361	58,698	77,084	81,064
Improvement	43,470	52,323	51,992	61,469	86,357	91,411
Total	38,717,277	39,779,467	42,550,806	47,554,054	51,429,159	52,729,762

SOURCE: CITY AND COUNTY OF HONOLULU, DEPARTMENT OF BUDGET AND FISCAL SERVICES, REAL PROPERTY ASSESSMENT DIVISION.

3.2.2

LAND USE DISTRICTS, MAUI COUNTY



SOURCE: HAWAII STATE OFFICE OF PLANNING, HAWAII STATEWIDE GIS PROGRAM, APRIL 2013.

3.2.3

ESTIMATED ACREAGE OF LAND USE DISTRICTS BY ISLAND, 2016

Total acreage, including inland water, as classified by the Hawai'i State Land Use Commission under the provisions of Chapter 205, Hawai'i Revised Statutes, as amended; all data are approximate

Classification by State Land Use Commission ²					
Island	Total Area ¹	Urban	Conservation	Agricultural	Rural
Hawai'i ³	2,573,400	54,145	1,304,347	1,212,886	2,023
Maui	465,800	24,191	194,836	242,720	4,053
Lāna'i	90,500	3,330	38,197	46,566	2,407
Moloka'i	165,800	2,539	49,768	111,627	1,866
Kaho'olawe	28,800	0	28,800	0	0
O'ahu	386,188	101,661	156,829	127,698	0
Kaua'i ⁴	353,900	14,573	198,769	139,305	1,253
Ni'ihau ⁴	45,700	0	0	45,700	0
Ka'ula and Lehua	400	0	400	0	0
Other islands ⁵	1,900	0	1,900	0	0
State Total	4,112,388	200,439	1,973,846	1,926,502	11,602

1. These totals differ somewhat from the official figures based on measurements by the Geography Division of the U.S. Bureau of the Census, cited in Section 5.

2. For definitions, see Hawai'i Revised Statutes, Section 205-2.

3. County records update indicated 5 acres changed from Agricultural to Urban.

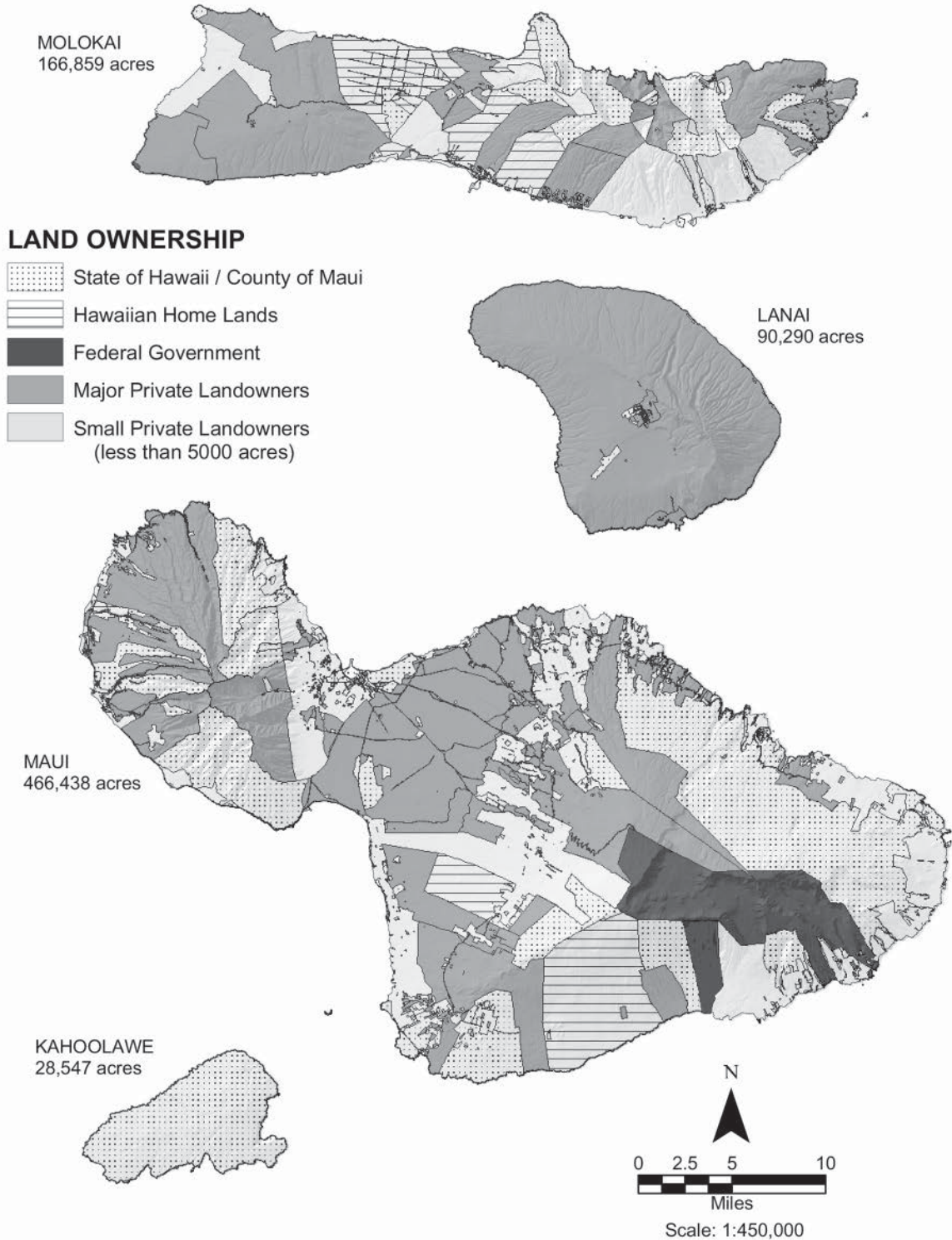
4. May be revised, pending updates of County records.

5. The Northwestern Hawaiian Islands, from Nihoa to Kure Atoll, excluding Midway.

SOURCE: HAWAII STATE DEPARTMENT OF BUSINESS, ECONOMIC DEVELOPMENT AND TOURISM, LAND USE COMMISSION.

3.2.4

LAND OWNERSHIP, MAUI COUNTY



SOURCE: HAWAII'S STATE OFFICE OF PLANNING, HAWAII'S STATEWIDE GIS PROGRAM, AUGUST 2013.

3.2.5

NUMBER OF LAND RECORDS BY COUNTY

For fiscal year ending June 30

Year	Maui	Hawai'i	Honolulu	Kaua'i	State Total
1995	56,726	129,856	242,285	27,136	456,003
1996	57,665	130,623	246,933	27,916	463,137
1997	58,624	131,981	251,731	28,876	471,212
1998	59,505	132,605	253,886	29,126	475,122
1999	60,490	133,322	255,589	29,336	478,737
2000	61,897	134,308	258,121	29,553	483,879
2001	62,873	135,499	259,456	29,818	487,646
2002	NA	NA	260,662	30,097	NA
2003	60,472	133,321	252,435	28,432	474,660
2004	60,537	134,290	255,029	28,772	478,628
2005	61,273	134,021	258,415	28,936	482,645
2006	62,521	134,885	262,479	29,423	489,308
2007	64,597	136,612	268,441	30,831	500,481
2008	65,938	138,281	271,859	31,822	507,900
2009	67,981	139,167	274,483	32,398	514,029
2010	68,930	139,649	276,582	32,870	518,031
2011	70,365	139,883	277,581	32,993	520,822
2012	71,101	140,008	278,825	34,023	523,957
2013	71,234	140,196	279,754	34,172	525,356
2014	71,515	140,257	281,463	34,124	527,359
2015	71,907	140,336	285,092	33,370	530,705
2016	71,992	140,753	287,115	33,207	533,067
2017	72,421	140,858	289,564	33,503	536,346

NA: Not available

SOURCE: CITY AND COUNTY OF HONOLULU, DEPARTMENT OF BUDGET & FISCAL SERVICES, REAL PROPERTY ASSESSMENT DIVISION.

3.2.6

NATIONAL AND STATE HISTORIC PLACES MAUI COUNTY

Island of Maui

'Alae Petroglyphs	Kamaole House Site
Alena Habitation Site	Kauhiale Complex
Asa Baldwin Residence	Kaupō School
Bank of Hawaii- Ha'ikū Branch	Ka'umi'umiua Heiau
Cave of Seven Coffins	Keanae School
Chee Kung Tong Society Hall	Keone'ō'io Archaeological District
Crater Historic District (Haleakala National Park)	Ket Hing Society Hall
Frank Baldwin/H.F. Rice Residence	Kilolani Congregational Church
Fred C. Baldwin Memorial Home	King Kamehameha III's Royal Residential Complex
Gomes Residence	Kīpahulu Historic District
H. Perrine Baldwin High School	Kīpapa Archaeological District
Haiku Fruit & Packing Co. Manager's House	Kula Sanitorium
Haiku Mill	Lahaina Historic District
Hale Hō'ike'ike	Lo'alo'a Heiau
Hale Pa'i	Luala'ilua Cave
Haleki'i-Pihana Heiau	Luala'ilua Heiau
Hale o Lono Heiau	Luala'ilua Terrace Complex
Hāmoa Complex	Lucy Kaiewe Searle Residence
Hāna Belt Road	Ma'alaea General Store
Hāna Hongwanji Temple	Makawao Union Church
Hāna District Police Station & Courthouse	Maui Jinsha Mission
Hāna Store	Moku'ula
Hanamau'uloa Complex	Molohai Heiau
Hardy House	Naniloa Drive Overpass Bridge
Holy Ghost Catholic Church	Old Bailey House
Honokalani Village	Pā'ia Mantokuji Soto Mission
Honokowai Petroglyphs	Pā'ia School
'Īao Theater	Papakea Heiau
Ka'ahumanu Church	Papakea Petroglyphs
Kahikinui House	Pi'ilanihale Heiau
Kahului Railroad Station	Pioneer Mill Company Office
Kaiapuni Ko'a	Pu'unēnē School
Kaimupe'elua Heiau	Wahene Platform
Kalepolepo Fishpond	Wai'ale Bridge
Kaluakakalioa Cave	Waihe'e Church
Kaluanui Heiau Complex	Waikapū Stone Church

3.2.6

CONTINUED

Island of Maui (Continued)

Wailuku Civic Center District
Wailuku School
Wānanalua Congregational Church
William K. Kaluakini Residence
Wo Hing Society Hall

Island of Kaho‘olawe

Kaho‘olawe Archaeological District

Island of Lāna‘i

Keāliakapu Complex-Kaunolu Village Site
Pu‘u Pehe Platform

Island of Moloka‘i

Ahahui Kalaniana‘ole
‘Ahina Heiau
Ali‘i Pond
Anahaki Gulch Complex
Ananaluwahine Cave
California Packing Corp.'s Plantation Manager's Res.
Fishing shrine at Keawa Ka Lani

FISHPONDS

Halemahana Fishpond
Honouliwai Fishtrap
Ipukaiole Fishpond
Kahinapōhaku Fishpond
Kainalu Fishpond
Kalua‘aha Fishpond
Kipapa Fishpond
Koloko‘eli Fishpond
Mahilika Fishpond
Mikiawa Fishpond
Pahiomu Fishpond
Panahana Fishpond
Waiakea Fishpond
Weheleau‘ulu Fishpond

Hökūkano ‘Ualapu‘e Complex
‘Ili‘ili‘ōpae Heiau
Kahokukano Heiau
Kalauonākukui Heiau
Kaluakapi‘ioho Heiau
Keawanui Fishpond
Kukui Heiau
Pāku‘i Heiau
Pu‘u‘ōlelo Heiau
‘Ualapu‘e Fishpond
Kaheu Gulch Habitation Site
Kahili Koa
Kalaupapa Leprosy Settlement
Kalua‘aha Church
Kalualohe Complex
Kamaka‘ipo Gulch Habitation Site
Kamaka‘ipo Lowlands Habitation Site
Kamaka‘ipo Point Fishing Shrine
Kape‘elua Complex
Kapukikani Heiau
Kaupikiawa Cave
Kawela archeological sites
Keawakalae Ko‘a
Kilohana School
Luahine Maika (Bowling) Run
Moloka‘i Public Library
Nanahoa Complex
Nihoa Complex
R. W. Meyer Sugar Mill
Sandalwood Pit
Southwest Moloka‘i Archeological District
St. Joseph Catholic Church
U.S. Coast Guard Moloka‘i Light

SOURCE: HAWAII‘I STATE DEPARTMENT OF LAND AND NATURAL RESOURCES, STATE HISTORIC PRESERVATION DIVISION.

3.2.7

DEPARTMENT OF HAWAIIAN HOME LANDS ACREAGE, LESSEES, AND APPLICANTS BY ISLAND

The Department of Hawaiian Home Lands administers land set aside for the benefit of qualified Native Hawaiians, who receive homestead leases and financial assistance from the Department

	Maui	Lānaʻi	Molokaʻi	Hawaiʻi	Kauaʻi	Oʻahu	State Total
Acreage¹							
Homestead Leases	NA	NA	NA	NA	NA	NA	NA
General Leases	2	0	1,764	741	98	234	2,839
Licenses	7,110	0	350	16,470	84	309	24,322
Others	6,351	25	9,982	19,122	1,184	1,853	38,517
Homestead Leases¹							
Residential	1,276	29	394	1,707	700	4,223	8,329
Agricultural	65	0	423	506	46	61	1,101
Pastoral	75	0	27	305	1	0	408
Applications²							
Residential	3,750	76	771	5,729	1,644	10,690	22,660
Agricultural	4,614	0	1,075	7,089	2,226	3,690	18,694
Pastoral	609	0	197	1,952	317	0	3,075

NA: Not available

1. As of June 30, 2014.

2. As of June 30, 2016.

SOURCE: HAWAIIʻI STATE DEPARTMENT OF HAWAIIAN HOMELANDS, ANNUAL REPORTS AND RECORDS.

3.2.8

**DISPOSITION OF STATE LANDS
MAUI COUNTY, 2017**

Document Number	Permittee or Grantee Name	Location	Acres	Use	Annual Rent
Revocable Permits					
RP7868	Association of Apartment Owners of Kihei Surfside	Wailuku	2.500	Landscaping	7,500
General Leases & Term Easements					
GL6111	Lanai Resorts, LLC	Lahaina	0.001	Encroachment	1,477*
GL6112	Lanai Resorts, LLC	Lahaina	0.013	Encroachment	31,412*
Executive Orders - Set Asides					
4543	Department of Education	Hana	2.409	Setting Aside Land for Public Purposes (For Teacher's Cottage Purposes)	
Executive Orders - Cancellations and Withdrawals					
4525	Department of Land and Natural Resources, Division of Forestry and Wildlife	Hana	441.000	Withdrawing Land from the Operation of Proclamation dated June 12, 1907	
4536	Department of Education	Makawao	0.038	Withdrawing Land from the Operation of Governor's Executive Order No. 2823 dated March 7, 1977	
4542	Hawaii Public Housing Authority	Hana	2.409	Cancellation of Governor's Executive Order No. 3333 dated April 24, 1986	
Fee Conveyances					
LOD29174	Kaonoulou Ranch LLLP	Makawao	29.175	Acquired for the set aside for new Kihei High School	1,401,000
LOD29175	Haleakala Ranch Company	Makawao	48.007	Acquired for the set aside for new Kihei High School	2,589,100

* One-time payment.

SOURCE: STATE OF HAWAII, DEPARTMENT OF LAND AND NATURAL RESOURCES.

3.2.9

SINGLE FAMILY HOME AND CONDOMINIUM SALES BY AREA, MAUI COUNTY, 2017

Area	# Sales	% Change Last Yr	Avg. Price	% Change Last Yr	Median Price	% Change Last Yr	Total Volume	% Change Last Yr
Single Family Homes								
Ha'ikū	85	31%	\$885,623	-4%	\$753,500	-11%	\$75,277,954	25%
Hāna	10	-17%	\$1,506,658	28%	\$1,148,542	64%	\$15,066,583	7%
Kā'anapali	23	5%	\$1,996,185	10%	\$1,780,000	11%	\$45,912,250	15%
Kahakuloa	1	-50%	\$575,000	-39%	\$575,000	-39%	\$575,000	-70%
Kahului	147	-5%	\$614,371	8%	\$600,000	8%	\$90,312,587	3%
Kapalua	8	-43%	\$2,615,000	-28%	\$2,487,500	-3%	\$20,920,000	-59%
Kīhei	190	8%	\$920,979	1%	\$702,000	12%	\$174,986,031	9%
Kula/Ulupalakua/Kanaio	79	23%	\$1,013,718	-11%	\$849,000	0%	\$80,083,700	10%
Lahaina	66	-6%	\$1,630,391	24%	\$1,100,000	44%	\$107,605,798	17%
Lāna'i	19	-5%	\$400,579	-10%	\$385,000	-8%	\$7,611,000	-15%
Mā'alaea	1	0%	\$3,500,000	141%	\$3,500,000	141%	\$3,500,000	141%
Makawao/Olinda/Hali'imaile	58	-12%	\$767,897	14%	\$634,500	10%	\$44,538,048	0%
Maui Meadows	28	8%	\$1,380,248	10%	\$1,280,000	-1%	\$38,646,930	19%
Moloka'i	22	22%	\$473,416	-2%	\$388,500	1%	\$10,415,160	20%
Nāpili/Kahana/Honokōwai	41	5%	\$969,328	-16%	\$905,000	2%	\$39,742,444	-12%
Olowalu	1	-50%	\$801,500	-75%	\$801,500	-75%	\$801,500	-87%
Pukalani	53	-24%	\$769,599	18%	\$680,500	9%	\$40,788,750	-11%
Spreckelsville/Pā'ia/Ku'au	24	-29%	\$2,663,087	51%	\$1,216,250	69%	\$63,914,099	8%
Wailea/Mākena	28	17%	\$4,480,996	17%	\$2,243,500	-27%	\$125,467,888	36%
Wailuku	215	10%	\$648,875	9%	\$617,435	9%	\$139,508,208	20%
Maui Summary	1,099	2%	\$1,024,271	6%	\$695,000	9%	\$1,125,673,930	8%
Condominiums								
Hana	1	0%	\$760,000	0%	\$760,000	0%	\$760,000	0%
Kā'anapali	129	-13%	\$1,068,258	-4%	\$780,000	-11%	\$137,805,334	-17%
Kahului	35	94%	\$131,794	2%	\$95,000	2%	\$4,612,780	99%
Kapalua	55	67%	\$1,994,251	-3%	\$950,000	-2%	\$109,683,787	62%
Kīhei	580	19%	\$460,611	9%	\$375,050	10%	\$267,154,518	29%
Lahaina	75	4%	\$536,477	13%	\$505,000	5%	\$40,235,755	17%
Lāna'i	10	67%	\$1,226,450	-18%	\$895,000	-26%	\$12,264,500	36%
Mā'alaea	43	59%	\$366,513	7%	\$323,600	0%	\$15,760,075	70%
Moloka'i	16	7%	\$143,828	-19%	\$116,125	-32%	\$2,301,250	-13%
Nāpili/Kahana/Honokōwai	222	-6%	\$464,651	12%	\$417,500	5%	\$103,152,503	6%
Pukalani	10	0%	\$561,700	10%	\$555,000	9%	\$5,617,000	10%
Spreckelsville/Pā'ia/Ku'au	1	-75%	\$354,000	-61%	\$354,000	10%	\$354,000	-90%
Wailea/Mākena	141	34%	\$1,695,956	21%	\$1,150,000	7%	\$239,129,828	63%
Wailuku	133	-10%	\$381,114	-5%	\$407,000	9%	\$50,688,109	-14%
Maui Summary	1,451	11%	\$681,957	10%	\$445,000	7%	\$989,519,439	22%

SOURCE: REALTORS ASSOCIATION OF MAUI, MLS SALE DATA.

3.2.10

**LAND SALES
BY AREA, MAUI COUNTY, 2017**

Area	# Sales	% Change Last Yr	Avg. Price	% Change Last Yr	Median Price	% Change Last Yr	Total Volume	% Change Last Yr
Ha'ikū	33	57%	\$483,323	-44%	\$400,000	-25%	\$15,949,668	-12%
Hāna	9	80%	\$361,111	-11%	\$425,000	37%	\$3,250,000	61%
Kā'anapali	16	-6%	\$700,234	6%	\$793,500	17%	\$11,203,750	0%
Kahakuloa	2	-50%	\$383,750	25%	\$383,750	15%	\$767,500	-38%
Kahului	3	200%	\$291,667	-38%	\$315,000	-33%	\$875,000	86%
Kapalua	6	-14%	\$963,167	-11%	\$825,000	-11%	\$5,779,000	-24%
Kihei	8	-33%	\$603,625	-11%	\$473,500	4%	\$4,829,000	-40%
Kula/Ulupalakua/ Kanaio	15	15%	\$982,813	59%	\$465,000	-14%	\$14,742,189	84%
Lahaina	8	-60%	\$970,000	-8%	\$932,500	-7%	\$7,760,000	-63%
Makawao/Olinda/ Hali'imaile	14	56%	\$563,736	49%	\$507,500	54%	\$7,892,300	132%
Maui Meadows	3	50%	\$467,833	-11%	\$501,000	-4%	\$1,403,500	34%
Moloka'i	20	54%	\$144,770	2%	\$132,500	6%	\$2,895,400	57%
Nāpili/Kahana/ Honokōwai	2	0%	\$765,000	86%	\$765,000	86%	\$1,530,000	86%
Olowalu	1	-67%	\$1,100,000	50%	\$1,100,000	57%	\$1,100,000	-50%
Pukalani	47	571%	\$329,292	-3%	\$325,650	2%	\$15,476,740	550%
Spreckelsville/ Pā'ia/Ku'au	1	0%	\$1,300,000	-56%	\$1,300,000	-56%	\$1,300,000	-56%
Wailea/Mākena	5	67%	\$646,000	-26%	\$550,000	-19%	\$3,230,000	23%
Wailuku	28	40%	\$377,021	11%	\$322,500	3%	\$10,556,574	56%
Maui Summary	221	36%	\$500,184	-21%	\$370,000	-18%	\$110,540,621	8%

SOURCE: REALTORS ASSOCIATION OF MAUI, MLS SALE DATA.

3.2.11

FOREST AND NATURAL AREA ACREAGE BY ISLAND

On June 30, 2016

Island	Conservation District Forest Land		Natural Areas	
	Forest Reserve ¹	Private Forest ²	Number of Areas	Acres
State Total	652,756	328,742	21	123,810
Hawai'i	448,101	106,745	8	94,954
Maui	68,220	53,180	5	18,543
Kaho'olawe	0	0	0	0
Lāna'i	0	6,150	0	0
Moloka'i	11,690	0	2	2,950
O'ahu	38,571	88,817	4	2,148
Kaua'i	86,174	73,850	2	5,215
Ni'ihau	0	0	0	0

1. State-owned and privately-owned lands under surrender agreement in forest reserve system.

2. Private forest land within conservation district. The majority of these lands were previously in the forest reserve system.

SOURCE: HAWAII STATE DEPARTMENT OF LAND AND NATURAL RESOURCES, DIVISION OF FORESTRY AND WILDLIFE.